



# I-710 Corridor Report

---

to

**Los Angeles Harbor Commission**

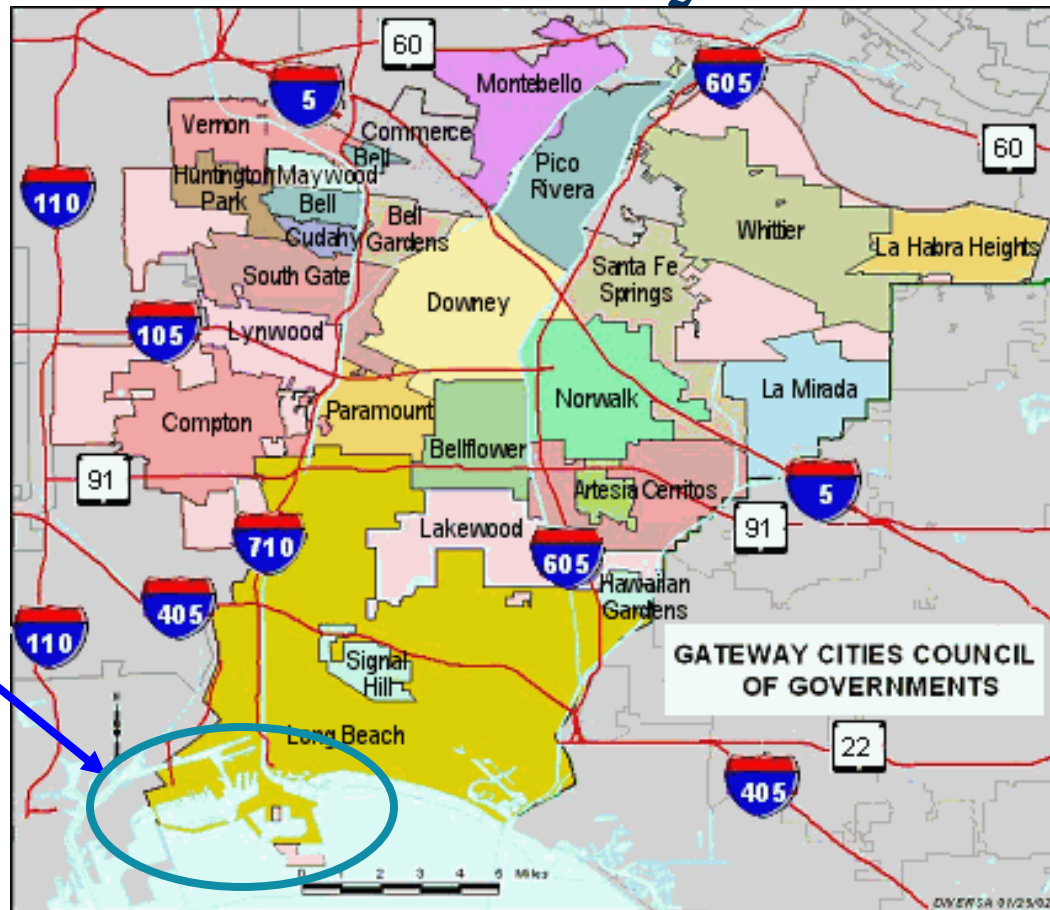
Richard R. Powers, Executive Director  
Gateway Cities Council of Governments

March 16, 2006

# I-710 Corridor Report

## The Gateway Cities

Ports of  
Long Beach  
and Los  
Angeles



# I-710 Corridor Report

---

## **What is Our Mission as a Council of Governments?**

- Transportation
- Air Quality
- Economic Development
- Housing/Sub-Regional Planning

# I-710 Corridor Report

---

Why Are We Addressing  
Expansion of the I-710  
Freeway?

# I-710 Corridor Report

---

## Safety

- On Average 1 Truck Related Accident Per Day
- More Truck Related Accidents than Any Other Freeway in California

# I-710 Corridor Report

---

## Mobility and Congestion on the Freeway and in Our Communities

- 35,000 Trucks Per Day from the Two Ports
- 90,000 to 100,000 by Year 2030
- 70,000 Trucks Per Day on I-710 South of I-405 in 2030
- 224,600 Trucks and Cars on the I-710 South of I-405 by 2030

# I-710 Corridor Report

## Jobs & The Economy

- Ports Generate 320,000 Jobs in the SCAG Region
- Trade and Logistics Jobs are Accessible to People with Limited Education
- Trade and Logistics Jobs Provide Upward Mobility through on-the-job Training and Career Ladders
- Those Jobs Hold Promise for Higher Pay Scale Jobs in a Region with Declining Pay Scales

# What was the process for the Major Corridor Study?

---

- Tier 1 Committees - Community Advisory Committees representing each corridor city at the option of each City Council
- Tier 2 Committee - Representing a broad stakeholder base

# Tier 2 Stakeholders

## ACADEMIA

Medicine  
Economics  
Urban Studies

## BUSINESS

Tourism  
Trucking  
Importing

## ENVIRONMENT

Open Space  
Affordable Housing  
Children's Health  
San Pedro Community  
Air Quality  
Environmental Justice

## LABOR

Goods Movement  
Trade Logistics  
Construction

## INSTITUTIONS / ADDITIONAL STAKEHOLDERS

Motorists  
South Bay Communities

## COMMUNITIES

Bell  
Bell Gardens  
Carson  
Commerce  
Compton  
Cudahy  
Downey  
East Los Angeles  
Huntington Park  
Central Long Beach  
Downtown Long Beach  
West Long Beach  
North Long Beach  
Lynwood  
Maywood  
Paramount  
South Gate  
Vernon

# Tier 2 Report

**I-710/MAJOR CORRIDOR STUDY**  
Tier 2 Community Advisory Committee

**Major Opportunity/Strategy Recommendations  
and Conditions**



August, 2004

## Tier 2 Report - Health Chapter Policy Considerations

---

The first consideration for approval of any improvements within the I-710 Corridor must be the project's ability to reduce air quality impacts. Air Quality in the corridor must be better at the time of construction than it is today. Therefore, these steps to reduce air pollution must be taken before construction can begin on the “mainline” project.

# Technical Advisory Committee

## Public Works Officials of the Following Public Agencies

- City of Bell
- City of Bell Gardens
- City of Carson
- City of Commerce
- City of Compton
- City of Cudahy
- City of Downey
- City of Huntington Park
- City of Long Beach
- City of Lynwood
- City of Maywood
- City of Paramount
- City of South Gate
- City of Vernon
- AQMD
- CHP
- CalTrans
- County of Los Angeles
- FHWA & FTA
- MTA
- The Port of Los Angeles
- The Port of Long Beach
- SCAG



# I-710 Oversight Policy Committee Members

---

- City of Bell
- City of Bell Gardens
- City of Carson
- City of Commerce
- City of Compton
- City of Cudahy
- City of Downey
- City of Huntington Park
- City of Long Beach
- City of Lynwood
- City of Maywood
- City of Paramount
- City of South Gate
- City of Vernon
- CalTrans
- County of Los Angeles
- MTA
- The Port of Long Beach
- The Port of Los Angeles
- SCAG



# I-710 Oversight Policy Committee Actions and Findings



**I-710 Oversight Policy  
Committee  
Adopted Locally Preferred  
Strategy  
November 18, 2004**

**EXECUTIVE SUMMARY**

Reproduced for Distribution - January 14, 2005

# MTA Board Approval

---

**“Draft Final Report on the I-710 Major Corridor Study between the Ports of Los Angeles/Long Beach and SR-60 Pomona Freeway”**

# Elements of the MTA Board Amendment

---

- East Los Angeles and City of Commerce “Mini-Study”
- Formation of a Multi-Jurisdictional Governance Entity
- Identification of Strategies to Achieve Near Term Air Quality Improvements
- Identification of Multiple Partner Funding Plan

# Elements of the MTA Board Amendment

---

## 1. East LA and City of Commerce

### “Mini Study”

Engineering Evaluation is complete and study reports presented to East LA and City of Commerce Community Advisory Committees.

# Elements of the MTA Board Amendment

---

## 2. Formation of a Multi-Jurisdictional Governance Entity

**Proposed I-710 Project Governance Structure**

**Metro Board**

**I-710 Program Executive Committee**

Metro  
 GCCOG  
 Caltrans  
 SCAG  
 Los Angeles County  
 I-710 EIR/EIS Project  
 Committee Co-Chairs  
 Port of Long Beach  
 Port of Los Angeles

**I-710 EIR/EIS Project Committee**

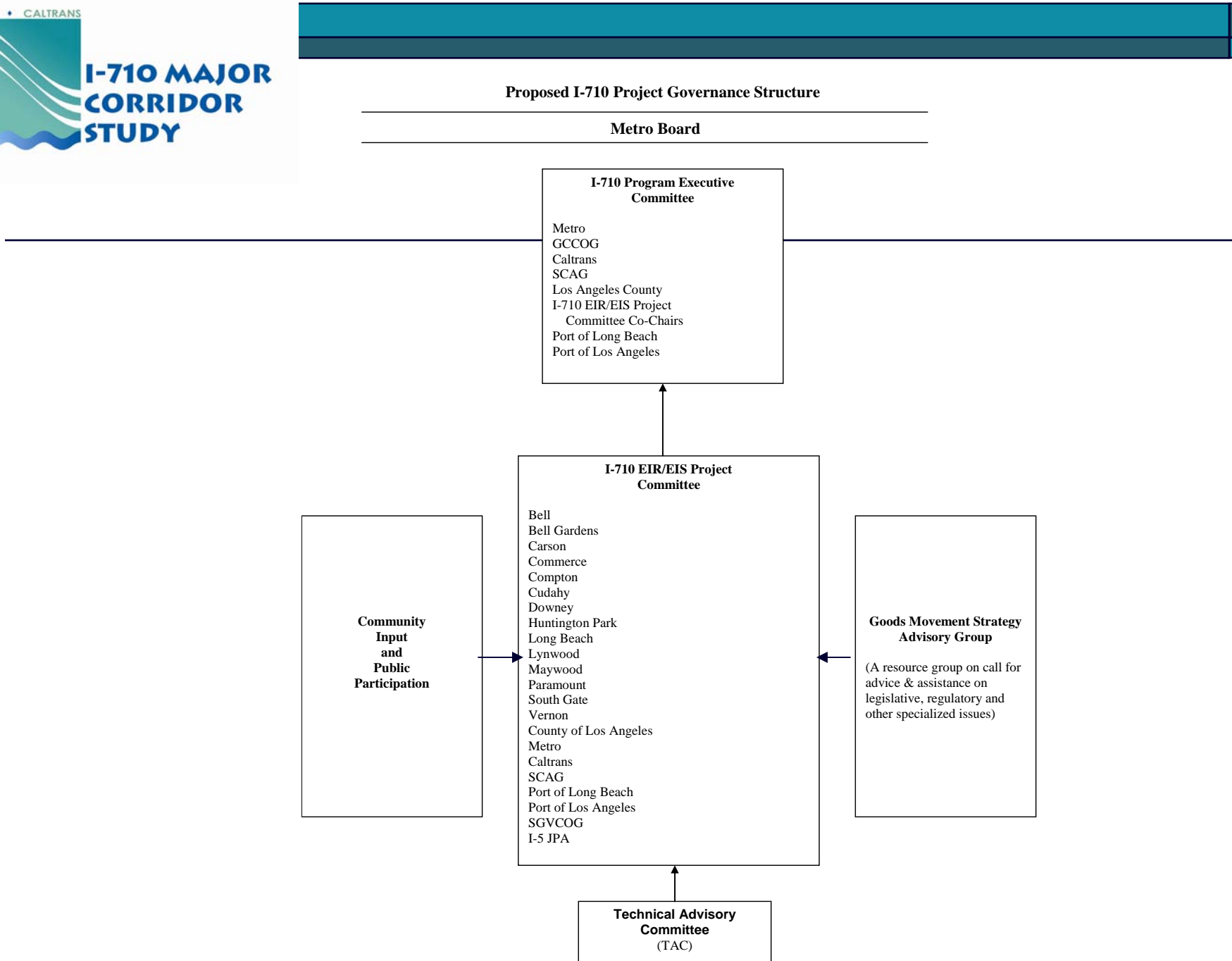
Bell  
 Bell Gardens  
 Carson  
 Commerce  
 Compton  
 Cudahy  
 Downey  
 Huntington Park  
 Long Beach  
 Lynwood  
 Maywood  
 Paramount  
 South Gate  
 Vernon  
 County of Los Angeles  
 Metro  
 Caltrans  
 SCAG  
 Port of Long Beach  
 Port of Los Angeles  
 SGVCOG  
 I-5 JPA

**Community Input and Public Participation**

**Goods Movement Strategy Advisory Group**

(A resource group on call for advice & assistance on legislative, regulatory and other specialized issues)

**Technical Advisory Committee (TAC)**



# Elements of the MTA Board Amendment

---

## 3. Identification of Strategies to Achieve Near Term Air Quality Improvements

Near Term Air Quality Strategies are in  
Process of Being Identified

# Elements of the MTA Board Amendment

## 4. Identification of Multiple Partner Funding Plan

Caltrans	\$5 Million
MTA	\$5 Million
Gateway Cities COG	\$5 Million
*Port of Long Beach	\$5 Million
Port of Los Angeles	\$5 Million
SCAG	\$3 Million
I-5 Joint Powers Authority	<u>\$2 Million</u>
	\$30 Million

\*Contingent on the Port of Los Angeles Approval

# Conclusion

The I-710 Freeway Expansion and Related Improvements will occur only if:

1. **Trust** is maintained with the communities.
2. The Health/Air Quality issues remain uppermost with public policy makers.
3. Ongoing, meaningful community participation and involvement occurs.



**I-710 MAJOR  
CORRIDOR  
STUDY**

